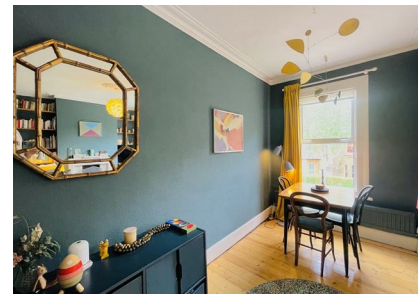


153 Winns Avenue, London, E17 5HB
£625,000

COMPLETION
SALES & LETTINGS



153 Winns Avenue, London, E17 5HB

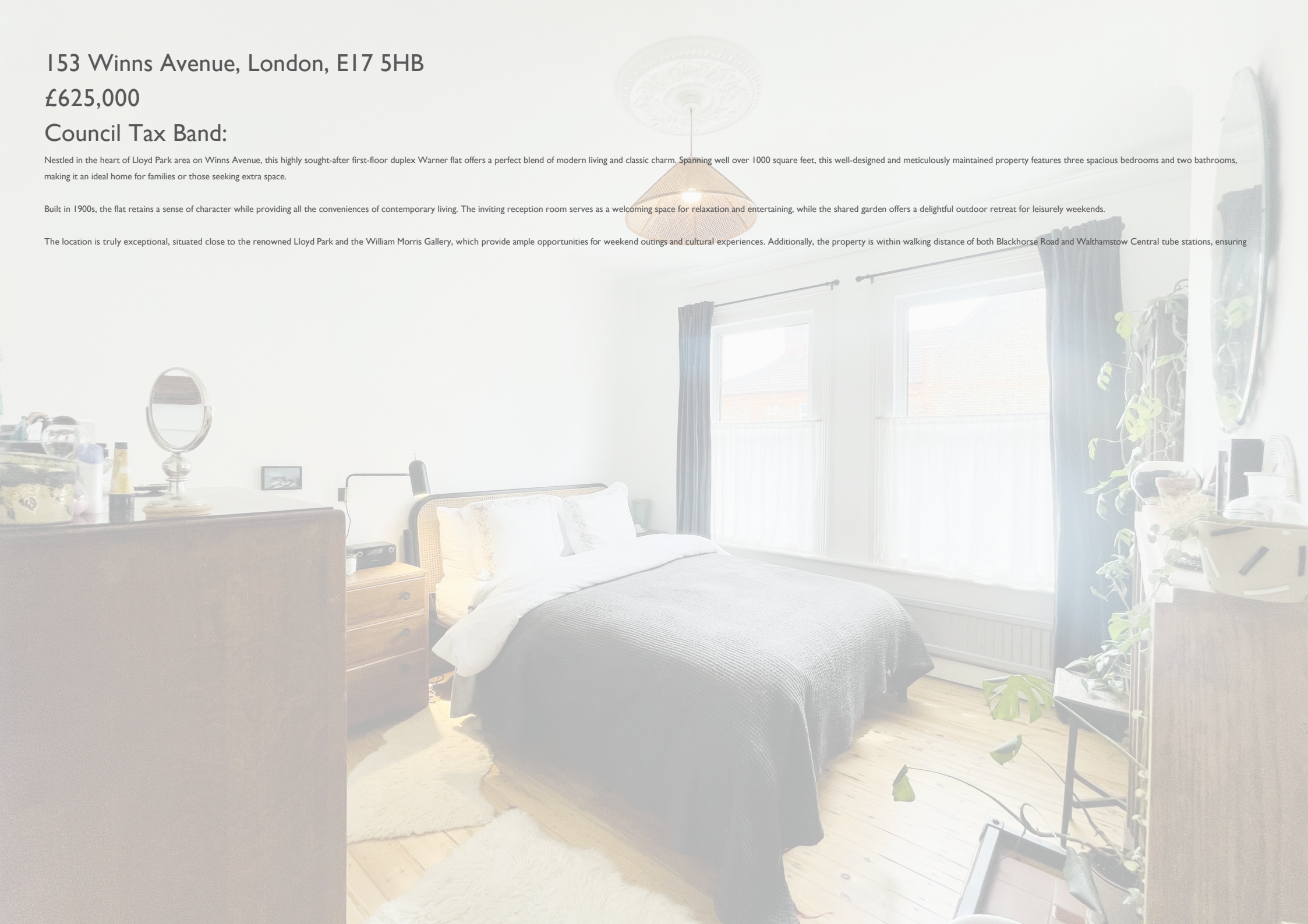
£625,000

Council Tax Band:

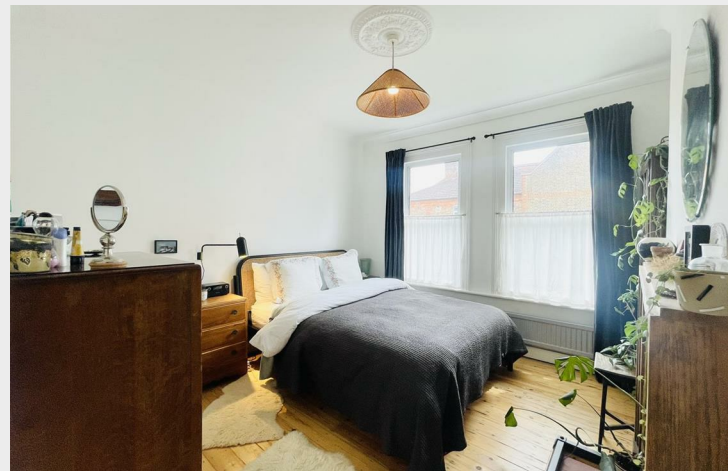
Nestled in the heart of Lloyd Park area on Winns Avenue, this highly sought-after first-floor duplex Warner flat offers a perfect blend of modern living and classic charm. Spanning well over 1000 square feet, this well-designed and meticulously maintained property features three spacious bedrooms and two bathrooms, making it an ideal home for families or those seeking extra space.

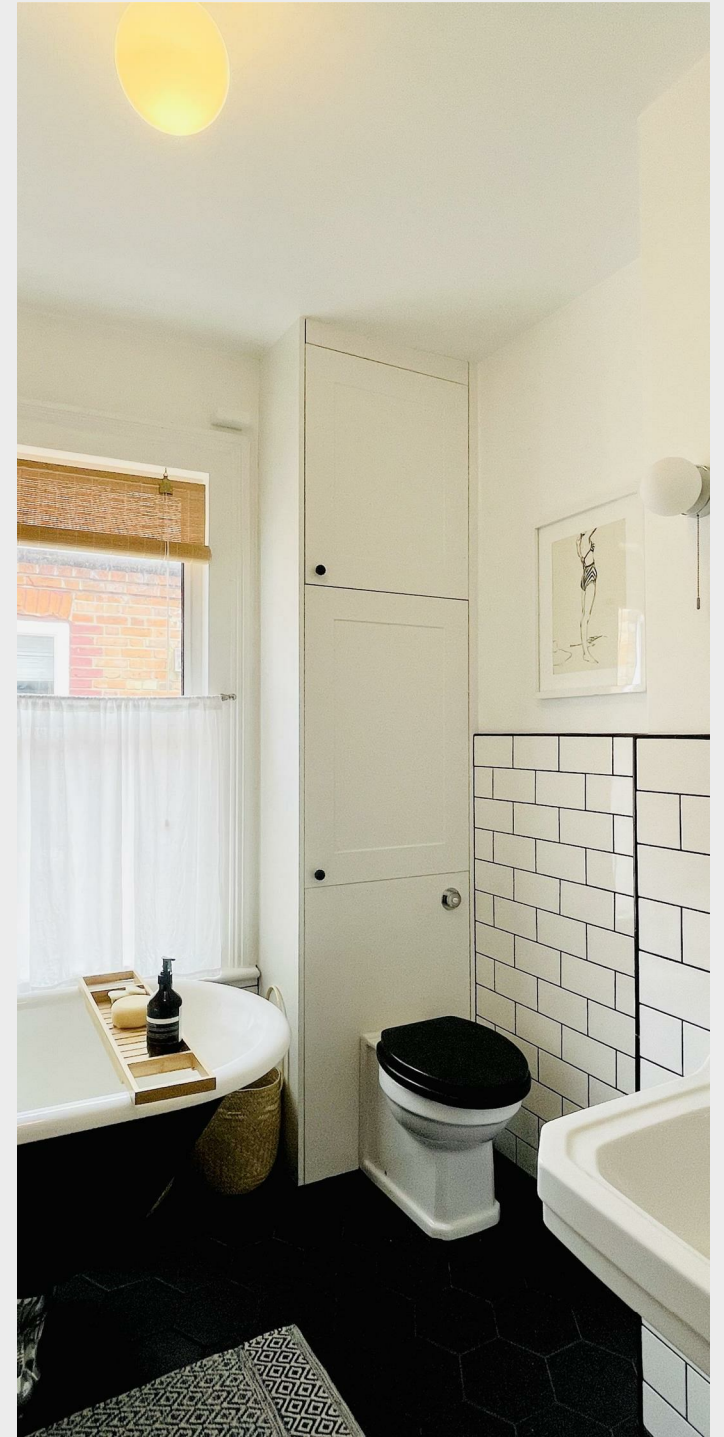
Built in 1900s, the flat retains a sense of character while providing all the conveniences of contemporary living. The inviting reception room serves as a welcoming space for relaxation and entertaining, while the shared garden offers a delightful outdoor retreat for leisurely weekends.

The location is truly exceptional, situated close to the renowned Lloyd Park and the William Morris Gallery, which provide ample opportunities for weekend outings and cultural experiences. Additionally, the property is within walking distance of both Blackhorse Road and Walthamstow Central tube stations, ensuring











337 Forest Road
London
E17 5JR
02085277007

enquiries@completion.co.uk
completion.co.uk

Energy Efficiency Rating		Current	Potential
Very energy efficient - lower running costs			
(92 plus) A			
(81-91) B			
(69-80) C			
(55-68) D			
(39-54) E		54	
(21-38) F			
(1-20) G			
Not energy efficient - higher running costs			
England & Wales		EU Directive 2002/91/EC	